



Botany, NSW
27/32 Stephen Road

2
BED

2
BATH

2
CAR

RobertAllan
Property

This oversized 2 bedroom apartment offers an open plan living & dining area, together with a galley style kitchen which has plenty of cupboard and bench space, a gas - top cooker and electric fan forced oven. There is ducted air-conditioning, louvered timber shutters throughout, Foxtel connection and a wide choice of storage space. The 2 generous bedrooms come with large built-in wardrobes. The main oversized master bedroom is located upstairs in the loft, with its own ensuite. Other features include; Internal laundry, security intercom access, a nice size balcony with gas connection for external BBQ, all within a very private setting. There is a huge upstairs storage room and a 2 car tandem style lock-up garage with remote control door access. Located close to Schools, parks, Botany Aquatic Centre, Westfield Eastgardens Shopping centre and public transport.

Auction: Sat, 7 Mar 2020
@ 11:15am

On Site

Council Rates: \$270/qtr (approx)

Water Rates: \$1,198/qtr (approx)

View: Sat, 29 Feb 2020 @ 11:00 am - 11:45 am
Wed, 4 Mar 2020 @ 6:00 pm - 6:45 pm

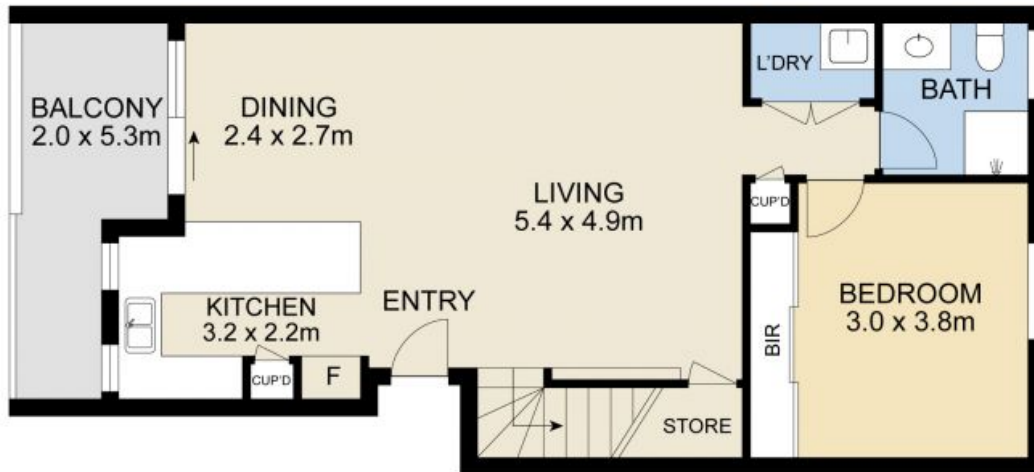
Contact: Allan Micallef
0423 606 645

Type: Apartment

<https://www.robertallanproperty.com.au>



SECOND LEVEL



FIRST LEVEL



GROUND LEVEL



Scale in metres. Indicative only. Dimensions are approximate. All information contained herein is gathered from sources we believe to be reliable. However we cannot guarantee its accuracy and interested persons should rely on their own enquiries.

27/32 Stephen Street, Botany

Plans shown are only indicative of layout. Dimensions are approximate.

Botany, NSW
 27/32 Stephen Road